

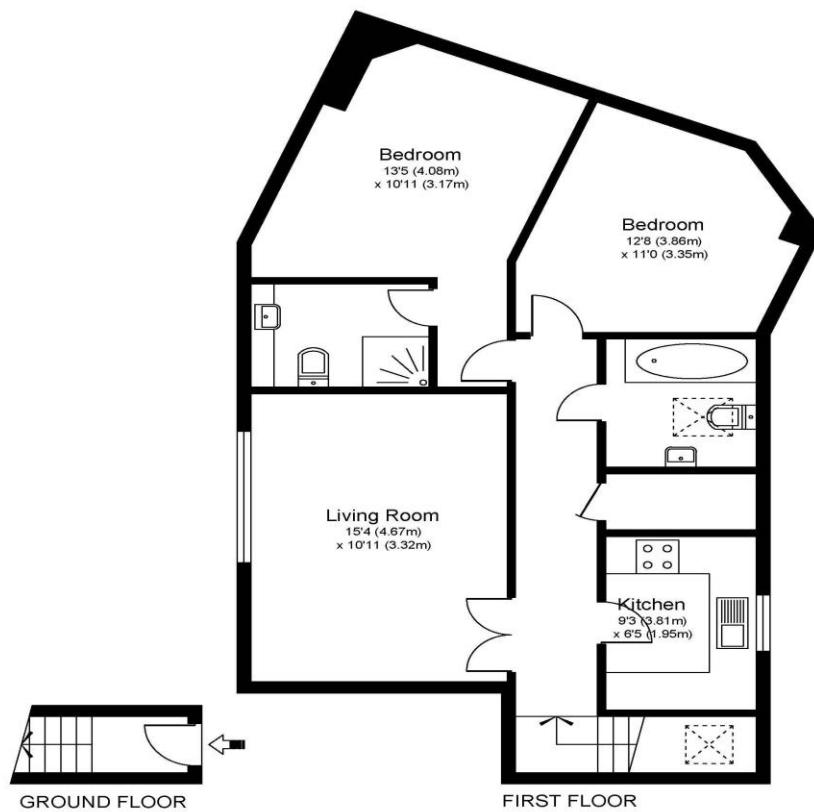


15 Oakland Grange Sidney Road Walton-On-Thames Surrey KT12 3SE

£1675pcm + Initial deposit.



OAKLAND GRANGE, 185 SYDNEY ROAD, KT12



Approximate Gross Internal Floor Area: 65 m sq / 700 sq ft

Whilst every attempt has been made to ensure the accuracy of the floor plan contained here, measurements of doors, windows and rooms are approximate and no responsibility is taken for any error, omission or misstatements. These plans are not to scale and are for representation purposes only as defined by RICS Code of Measuring Practice and should be used as such by any prospective purchaser. Specifically no guarantee is given on total square footage of the property if quoted on this plan. Any figure given is for initial guidance only and should not be relied on as a basis of valuation.

A two-bedroom, two-bathroom modern maisonette set within a popular gated development. Set on the first floor with the added benefit of having its own private entrance and set next to the communal garden. Both bedrooms are doubles, with the main having an en-suite shower room. The kitchen is separate and fully fitted including white goods. The lounge is a comfortable size and allows for dining space. The block has a secure gated entrance and comes with an allocated parking space plus the bonus of visitor parking. The development is set back and situated in a popular road close to Walton mainline station, with its fast train to Waterloo in just 26 minutes, and within walking distance of the halfway shops and Walton town centre, with its vast array of coffee shops and restaurants. Offered to rent unfurnished from 8th March 2024. EPC Rating C.



AGENTS NOTES: These details do not constitute any part of an offer or contract. In issuing them we do not have any authority to give any warranty or representation whatsoever in respect of this property. These details are provided without any responsibility on our part or the part of the vendors. No statements in these details are to be relied upon as representations of fact and purchasers should satisfy themselves by inspection or otherwise as to the accuracy of the statements contained therein.

Equipment: We have not tested the equipment or central heating system mentioned in these particulars and purchasers are advised to satisfy themselves as to their working order and condition.

Measurements: Great care is taken when measuring but measurements should not be relied upon for ordering carpets, equipment, etc.